

## Optowire Anchor clamp

### Anchor clamp S Type

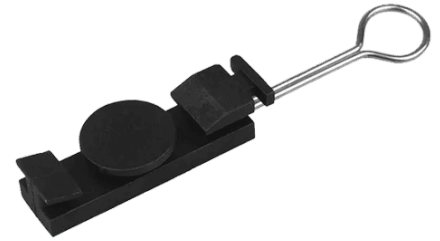
Anchor clamp **S Type** is good insulating property

High mechanical strength

Easy installation without additional tools

UV resistant thermoplastic and stainless-steel material, durable

Excellent environmental stability



## TECHNICAL SHEET

Type	S-Type
Material	<b>C201SS steel rope +ABS material.</b>
Loop Type	<b>galvanized steel</b>
Cable OD (mm)	<b>2-6</b>
MTL (kN)	<b>1.5</b>
Operating temperature(°C)	<b>-40 ~ 50</b>
Installation temperature(°C)	<b>-20 ~ 50</b>